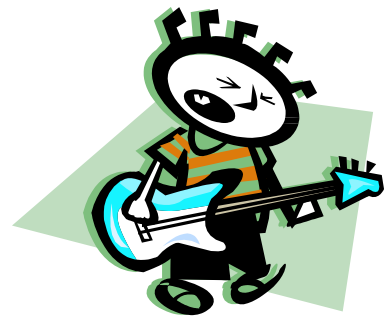


Refuge

Handbook



**I will say to the LORD,
“My refuge and my for-
tress, my God, in whom I
trust.”**

Psalm 91:2

Refuge

Exists to equip and encourage student lead worshipers who desire to worship God in spirit and truth with musical, drama, and technical skills they have been given by the grace of God.

SCHEDULE:

Sundays	5:00 PM
Wednesday	6:30 PM

• What is *Refuge*?

It is discipleship in worship. Those who participate in *Refuge* will learn to sharpen their God given skills to be used for corporate worship. They will also be taught Scriptural principles for worship as well as organizational skills that will help them become more effective "lead worshipers".

• What is a "lead worshiper"?

A person who, while worshipping the Lord, directs and facilitates others to worship.

• What are the requirements and expectations for *Refuge* participants?

The following applies to students as well as adult leaders:

- **Application Process:** Students interested in participating in *Refuge* should complete an application and interview process with the *Refuge* director and student minister for his or her particular age group. Students must go through a six week probationary period before playing in worship services. Adult leaders may choose to extend or shorten this period depending on circumstances. During this period students must attend practices on Sundays.
- **Attendance & Punctuality:** 75%

- **Spiritual Accountability:** Students and adult leaders will be asked to attend the discipleship sessions at 5:00PM each Sunday. They will also be asked to maintain a worship journal for recording notes from their own personal worship times during the week. If students do not currently have material or a plan for personal worship time these will be provided. The *Refuge* director and student ministers may ask questions of accountability at any time.
- **Authority of Adult Leaders:** Adult leaders have the authority to encourage, direct and correct students. Leaders should keep the *Refuge* director and the student ministers informed of any questionable behavior and/or conflict.
- **Student leaders:** Student leaders may be appointed for various purposes. A student leader will work together with the *Refuge* director, student minister and adult leaders to plan worship services and give input on behalf of the whole group when decisions need to be made.
- **Special Events and Rehearsals:** Participants will sometimes be asked to lead worship at a time other than Wednesday night. (Ex. Sunday evening worship service) This may require extra rehearsals, other than Sunday afternoon, which will be scheduled to accommodate a majority of students and leaders who participate.
- **Community Ministry:** *Refuge* will sometimes have the opportunity to minister outside of Longview Heights. These opportunities will include but are not limited to: nursing home ministry, community outreach events, church- wide events, mission trips etc.
- **Removal from *Refuge*:** Students and or leaders who fail to meet and maintain the requirements outlined above may be asked by the *Refuge* director and student minister to take a leave of absence for a period of time.